

Intensives

AXIS

Intensives

June 25-29 & August 6-10
[Jazz/Hip Hop] [Contemporary]

Ages 8-11 Int | M-F 11a-4p | *\$325

Ages 12+ Adv. | M-F 9:30AM-3:30PM | *\$450

*\$25 off early bird before 4/1

Ballet



June 11-15

Jr. Ballet Intensive

(L3 pre-qualified, L2 approval needed)
M-F 10:30am-3:30pm | \$295

Senior Ballet Intensive

(L4 & L5 prequalified)
M-F 10:00am-3:30pm | \$395

PLAYBILL

3-WEEK PRODUCTION

hairspray

July 9th - July 27th
M-F 9a-3p | \$920

Weekly Schedule

Week of June 11th

- Moana's Bravery Half Day Camp: Ages 3-5
- Drill/Jumps & Turns WKSP: Ages 10-15 Int
- Ballet Intensive: Levels 3-5 (L2 with instructor approval)

Week of June 18th

- Cupcakes & Cartwheels Full Day Camp: Ages 6-9 & 10+
- Hip Hop WKSP: Ages 10-15 Int
- Musical Theater WKSP(Hamilton): Ages 10-17

Week of June 25th

- Anna's Love (Frozen) Half Day Camp: Ages 3-5
- June **AXIS** Intensive: Ages 8+ Int, 12+ Adv

Week of July 2nd

- Incredible Honesty Half Day Camp: Ages 3-5 (4 day camp - closed on 7/4)
- Acro WKSP: Ages 10-15 Int
- Tap WKSP: Ages 10-15 Int

Week of July 9th

- Coco's Determination Half Day Camp: Ages 3-5
- Brave Artist WKSP: Ages 10-15 Int
- Musical Theater Intensive (week 1 of 3 week production)

Week of July 16th

- Dory's Dependability Half Day Camp: Ages 3-5
- Extreme Athlete WKSP: Ages 10-15 Int
- Musical Theater Intensive (week 2 of 3 week production)

Week of July 23rd

- Star Wars' Courage Half Day Camp: Ages 3-5
- Tech Boot Camp WKSP: Ages 10-15 Int
- Musical Theater Intensive (week 3 of 3 week production)

Week of July 30th

- A Dinosaur's Goodness Half Day Camp: Ages 3-5
- Swag Bag WKSP: Ages 10-15 Int
- Musical Theater WKSP (Wicked): Ages 10-17

Week of Aug 6th

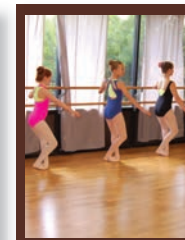
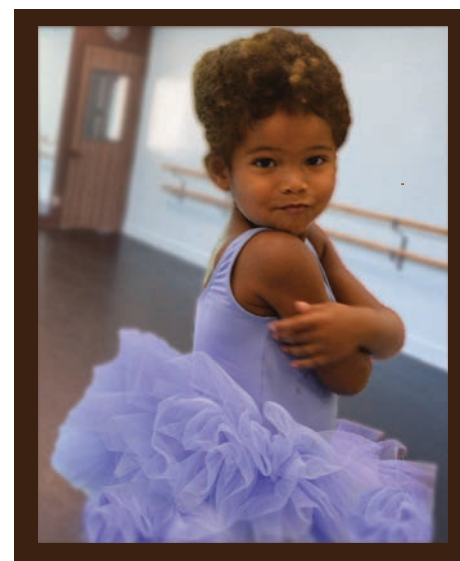
- Cirque de Balance Full Day Camp: Ages 6-10
- August **AXIS** Intensive: Ages 8+ Int, 12+ Adv



Balance DANCE STUDIOS

Summer Dance Program

Camps
Workshops
Classes
Intensives



4544 S. Lamar Blvd. #200-300
Austin Texas 78745

512.215.8727 | balancedancestudios.com
info@balancedancestudios.com

Camps

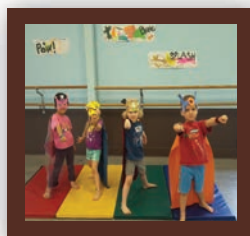
Half Day Camps

9:00am - 1:00pm

Ages 3-5

\$225/week (M-F)

(\$25 of before 4/1)



June 11-15	Moana's Bravery
June 25-29	Anna's Love (Frozen)
July 2-6 (excluding 7/4)	Incredible Honesty (Pro-rated 4 day camp)
July 9-13	Coco's Determination
July 16-20	Dory's Dependability
July 23-27	Star Wars' Courage
July 30-Aug 3	A Dinosaur's Goodness

*All campers must be potty trained



Full Day Camps

9:00am - 4:00pm

(\$25 off before 4/1)

Cupcakes & Cartwheels

June 18-22 | Ages 6-9 & 10+ | \$350

Cirque de Balance

Aug 6-10 | Ages 6-10 | \$325

Workshops

12:30 pm - 3:30 pm

Ages 10-15 Int

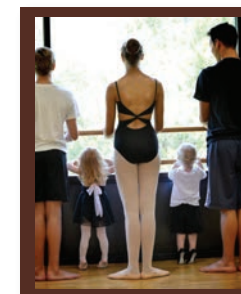
\$150/week (Tu-Th)

6/12-6/14	Drill/Jumps & Turns
6/19-6/21	Hip Hop Musical Theater (Hamilton)
7/2-7/3 & 7/5	Acro (meets M,T,TH)
7/10-7/12	Brave Artist
7/17-7/19	Extreme Athlete
7/24-7/26	Tech Boot Camp
7/31-8/2	Swag Bag Musical Theater (Wicked)



Classes

Classes for all
Ages & Levels



Youth

Registration open for weekly classes
(9-week session) for ages 2 +

Dancers & Dreamers Classes Ages 2-5

Classic Combo

Funky Monkey (Acro/Hip Hop)

Fairytale Ballet

Youth Classes Ages 6+

Acro | Ballet | Body Conditioning
Contemporary | Flexibility | Hip Hop
Improv | Jazz | Jumps & Turns | Modern
Musical Theater | Pilates | Pointe

*High School Class Cards

10 hour pass - \$160

20 hour pass- \$300

*Must be between the ages of 15-18 by 6/11

Adult

Class cards available for purchase,
allowing you access to an assortment
of adult dance and fitness classes.